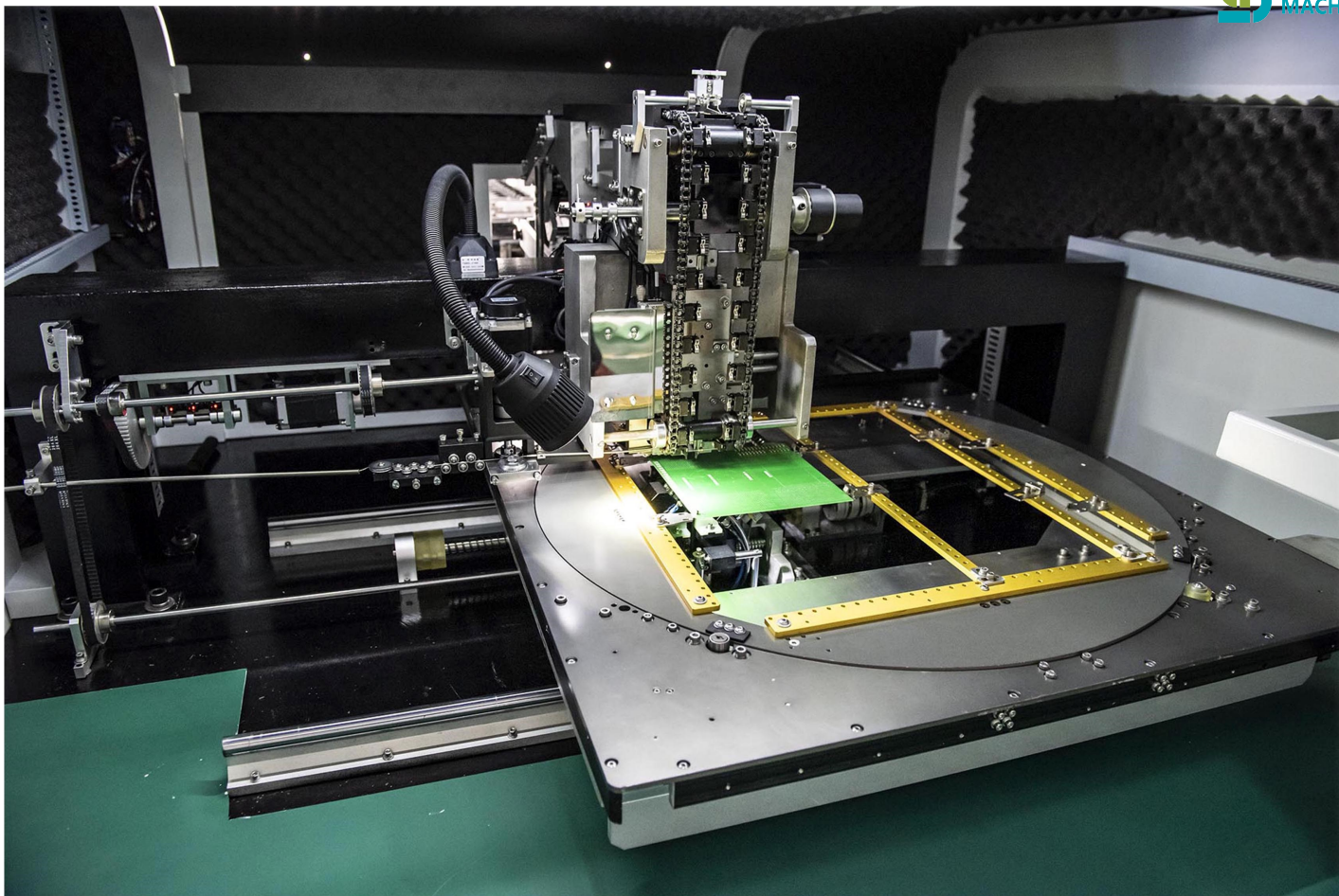


S-4000

Axial Inserter



The expert of through-hole automation

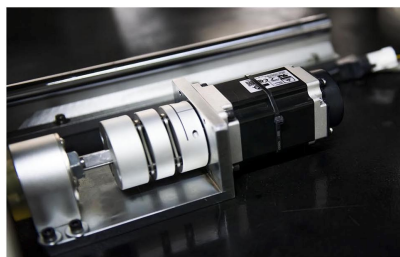


For single-process sequencing and insertion of axial components and jumper wires, the L-4002 delivers reliable productivity at the high throughput rates.

- high real throughput (13000 CPH)
- World-class reliability (1000 ppm)
- Manual Load or Automatic PCB Load/Unload
- Multiple clinch options with programmable height to avoid damaging SM components
- Scalable production – 20 to 100 feeder inputs,
- built-in jumper wire feeding ASSY
- Insertion spans from 5mm to 20.0mm,
- Up to 22mm jumper span
- Component insertion miss check
- Simple-to-use operator environment with graphical interface



750 KW head-driven motor



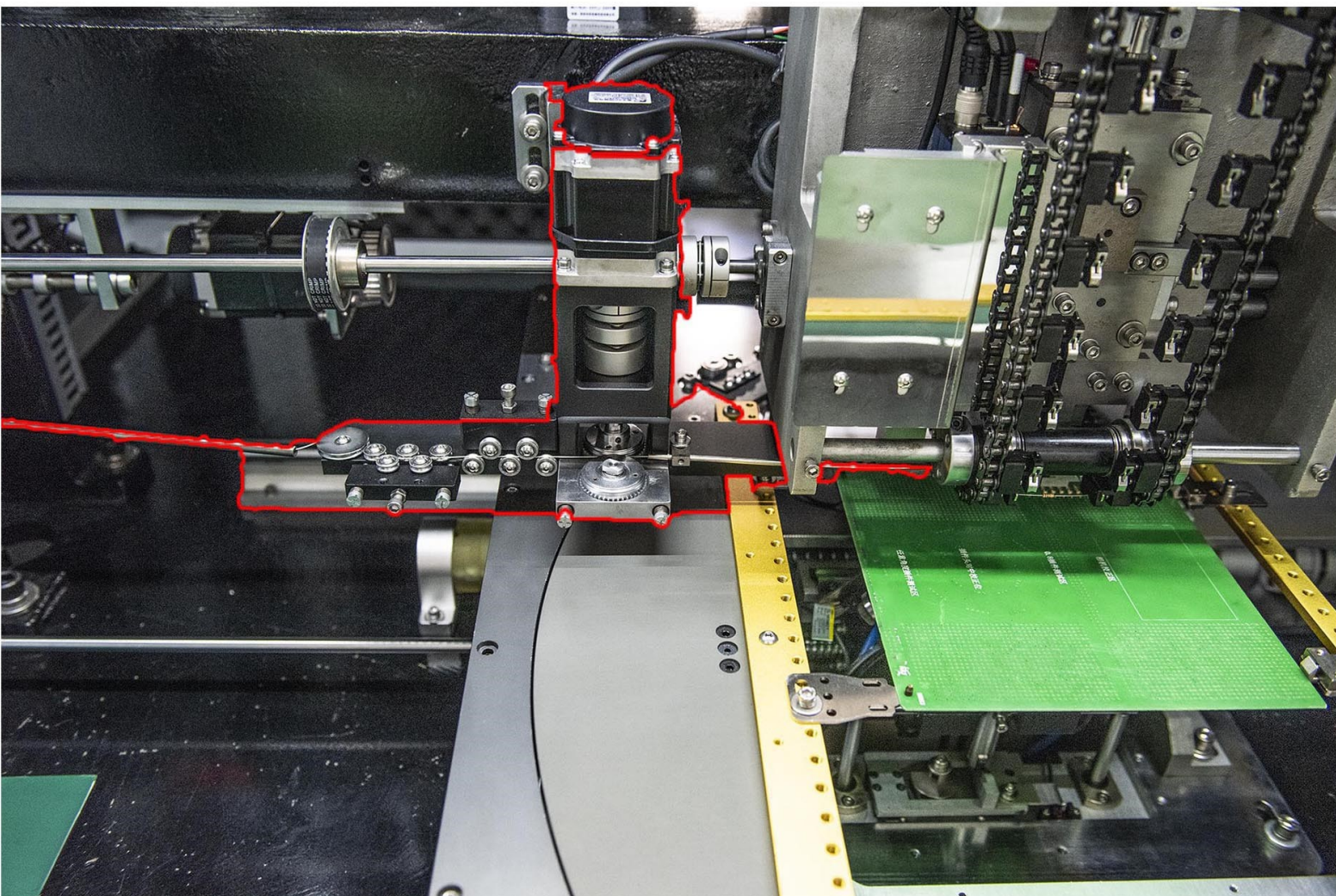
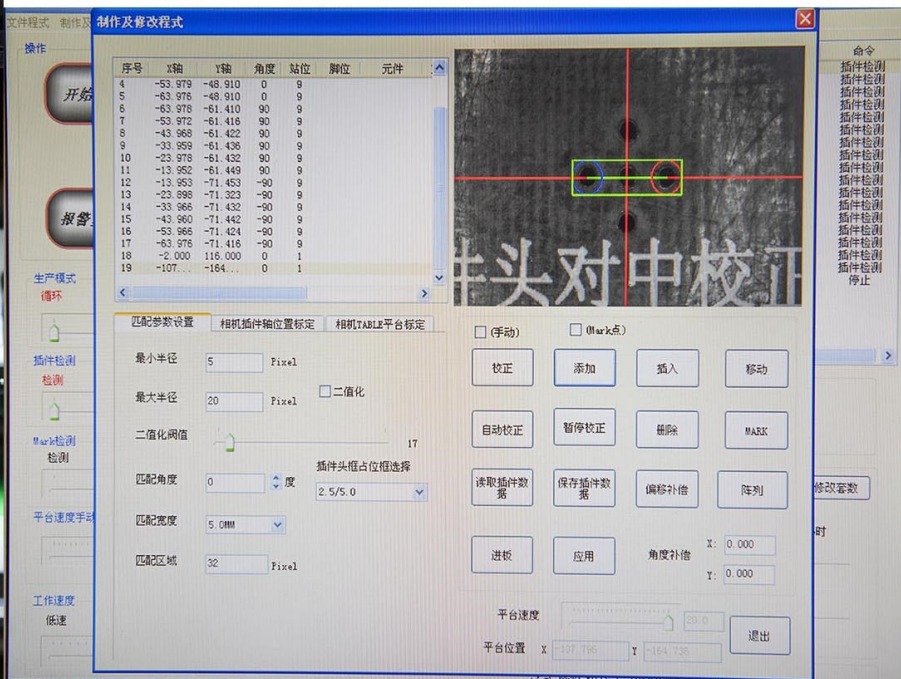
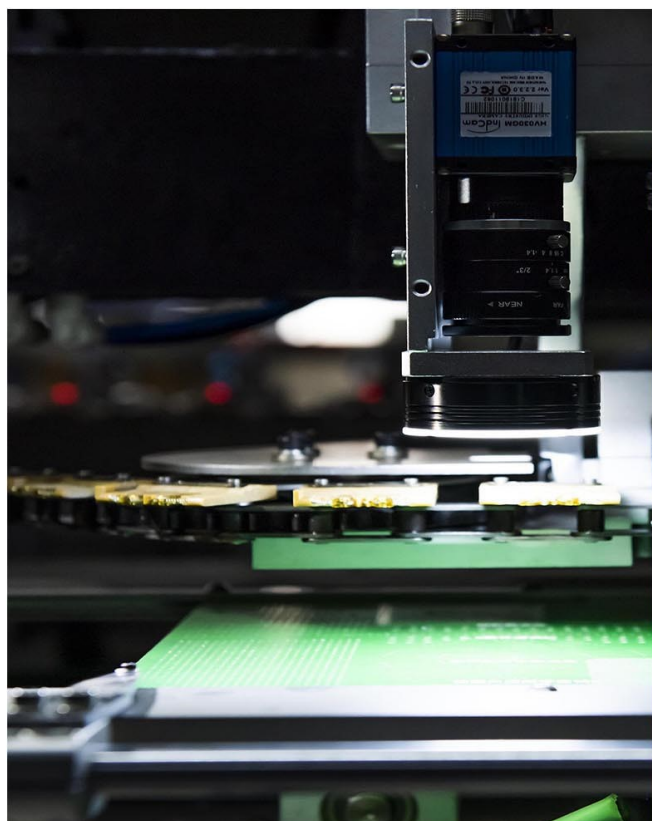
400W X-Y table motor



Full servo system

Full Fuji Servo Drive System bring high throughput (12000 CPH) and reliability (1000ppm)

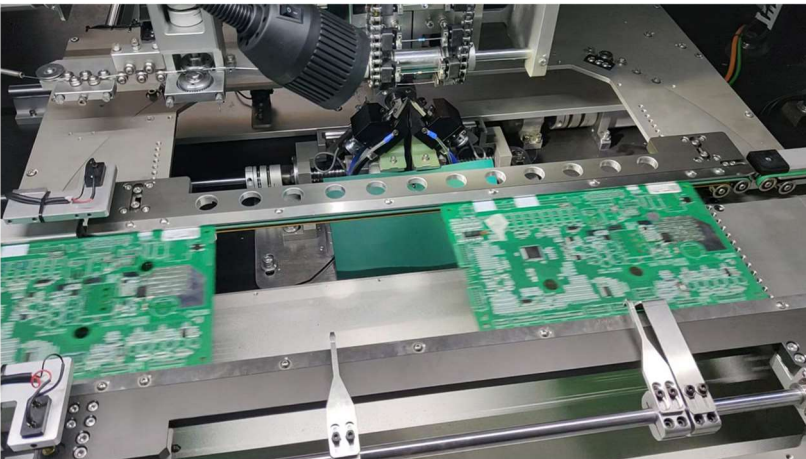
camera visual operating system makes programming faster, the operator can finish a new PCB insertion program within 5 minutes



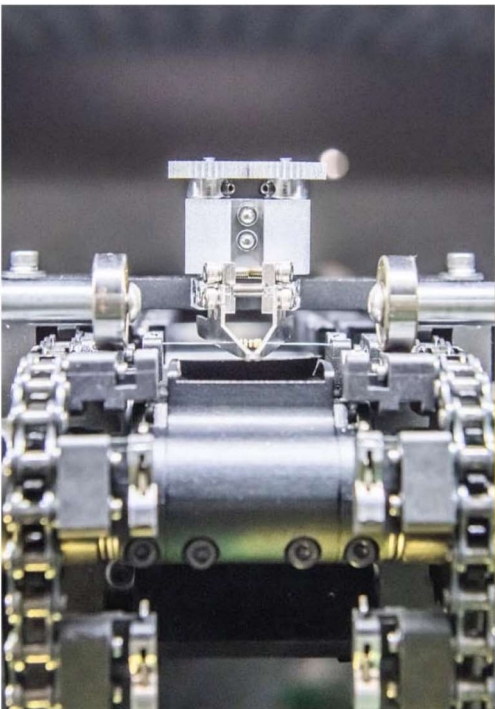
Built-in jumper wire feeding ASSY save more jump cost and feeder position



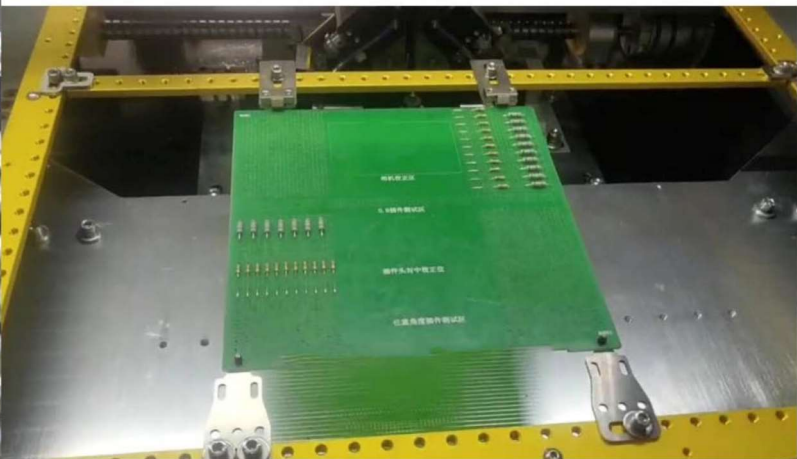
Compatible with UIC Feeder, stable and durable



Provide online mode



Centring gripper ,
keep component always alignment



Application:



LED Signage / LED Illumination



LED Drivers / Fluorescent Ballasts



Set-top Box / Game / Motherboard



Appliance (White Goods)

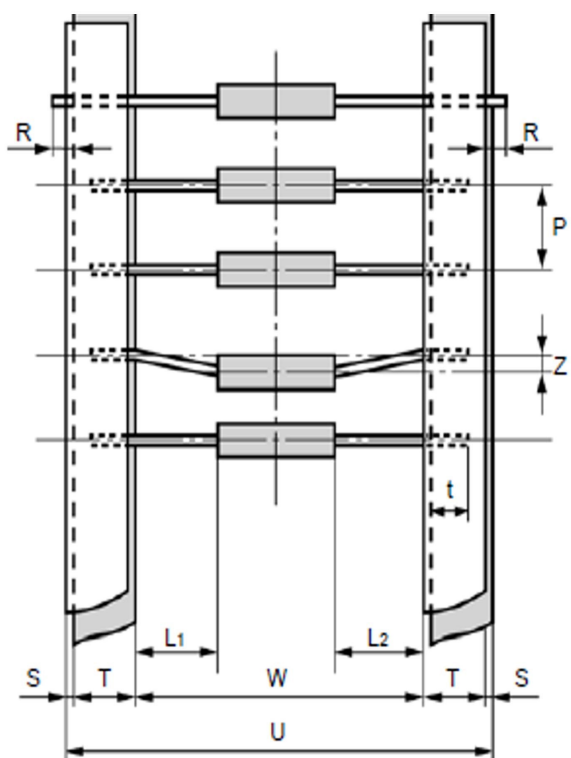
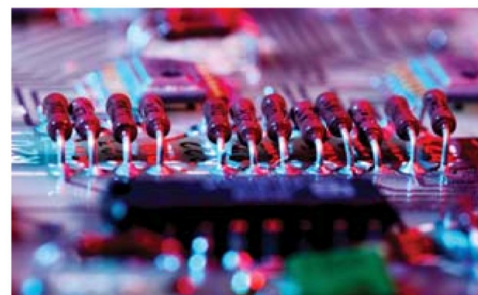
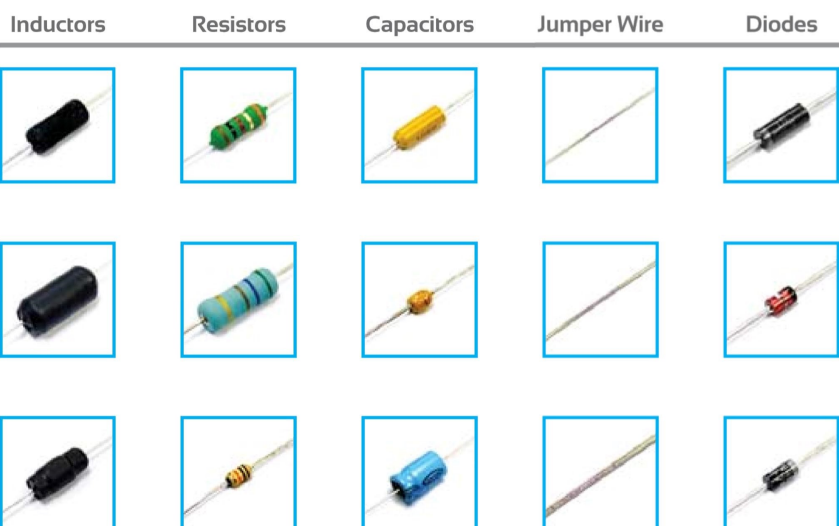


Power Conversion



High-Mix Environments

Insert a full array of axial lead components and jumper wire diameters



精度	I	II	III	备注
W	$26_{0}^{+0.2}$	$26_{0}^{+0.5}$	$26_{0}^{+1.5}$	
	$(52)_{0}^{+0.2}$	$(52)_{0}^{+0.5}$	$(52)_{0}^{+1.5}$	
P	5 ± 0.3		$5 \pm 0.5^{**}$	
L1 - L2	0.2 以下	0.5 以下	1 以下	
T	$6 \pm 1^{**}$			
Z	1.0 以下		1.2 以下 ^{**}	
R	0			^{**}
t	3.2 以上 ^{**}			
S	0.8 以下 ^{**}			
U	65.5 以下			
备注				

Machine specification

Item	Technical Specifications
Insertion Rate	24000 pcs/hr
Non Performing Rate	Less than 300PPM
Insert Theta	Parallel 0°,90°,180°, 270°
Component Span	Dual span 5.0mm-20mm
PCB size	Min:50mm*50mm; Max: 450mm*450mm
PCB thickness	0.79-2.36mm
Component types	Axial tape packed material, such as capacitor, transistor, diode, resistor, blown fuse.
Clinch length	1.2-2.2mm(adjustable)
Clinch degree	0-35°(adjustable)
Station quantity	60 stations(recommended),optional (10-100 stations)
Machine size (length×width×height)	Main unit 1700mm×1300mm×1600mm
Station size(length×width×height)	510mm×1000mm×1410mm(10 stations)
Main unit weight	1500KG
Auxiliary unit weight	750KG (40 stations)
Power supply	220V,AC(single phase), 50/60HZ, 2.0KVA;
System protection	Uninterruptible power supply (UPS) configuration, run 15 minutes after power outage
Working power	1.6KW (Energy Saving)
Air pressure	0.6–0.8MPA
Air consumption	0.3m ³ /minute